



ON THE ROAD

A BI-WEEKLY PUBLICATION

DECEMBER 30, 2011



MEN'S BREAKFAST BIBLE STUDY

Men, start the new year right by deciding to set aside the 1st Saturday of each month to share breakfast with other men at Emmaus followed by an informal Bible study with Pastor Steve! The first one in 2012 will be this Saturday, January 7th, beginning at 8:30, done by 10:00.

ANNUAL BIRTHDAY "BASH!"

Let's "kick off" the new year with a celebration of birthdays! Everyone will observe a birthday sometime during the year, so let's start the year by celebrating them all together!

We'll begin at 12:15 p.m. this **Sunday, January 8th**, with a **potluck lunch** in Elgaard Fellowship Hall. (Ovens in the kitchen will be on low heat for those who need to keep food warm during worship.) And, of course, there will be birthday cake for everyone! Come to learn who shares the same birth month with you ~ or even the same birthday! Then play some fun birthday games. (Remember "Pin the Tail on the Donkey?")

Don't forget: Birthday "Bash" with Emmaus friends, this Sunday, January 8th!



CONSECRATION SUNDAY

You will be receiving ~ or perhaps already have received ~ a letter requesting you to indicate your intended financial support of Emmaus' mission and ministry in 2012. Please bring your "statement of intent" card with you to worship on **Sunday, January 15th**, to place upon the altar to be "consecrated" (set apart for a holy purpose). Thank you for making an effort to carefully consider your response.



FORUM

~ Sundays at 10:00 a.m. in Elgaard Fellowship Hall ~

This Sunday, January 8th, is the 2nd Sunday of the month when we discuss the feature article in the current issue of **The Lutheran** magazine. Bring your **Lutheran** from home!



WOMEN'S CIRCLES NEED YOUR HELP!

When Lutheran World Relief distributes Personal Care Kits, it's often to people who have lost everything in the wake of an earthquake, or having fled from violence as their homes were overtaken, they clasp a towel from a faraway place, with a bar of soap, a toothbrush...and washing up, they know that they have not been forsaken by the world.

The very simple gesture of giving a Personal Care Kit can give someone the encouragement to start anew, starting with a bath. You can share God's grace and love by providing that simple comfort. Here's how:

The circles are asking that each congregation member donate the item of the month. We will have a collection box in the entry way for the items. Our goal is to provide as many kits as possible. We will be putting the kits together in April. Below is the schedule of what we are collecting. If you would like to purchase all of your items at one time and donate them all in one month, that is great too! If you have any questions regarding the collections of items, please feel free to call Barb Whitford at 541-485-6053.

January: 1 dark color bath-size towel (Approx. 52" x 27") Hit Those White Sales in January!!

February: 2 (4- 5 oz) bath-size bar of soap, any brand, in its original wrapping

March: 1 sturdy comb and 1 metal nail clipper (attached file optional)

April: We will be putting the kits together at our meeting!

Thank you for all of your help!



A MEMORIAL SERVICE for **Ethel Carlstrom**, who died on December 9th, will be at Emmaus this Friday, January 6th, at 3:00 p.m.

LOOKING AHEAD...

Emmaus will host the **Interfaith Homeless Shelter** program sponsored by St. Vincent de Paul during the week of Monday, February 6th, to Monday, February 13th.

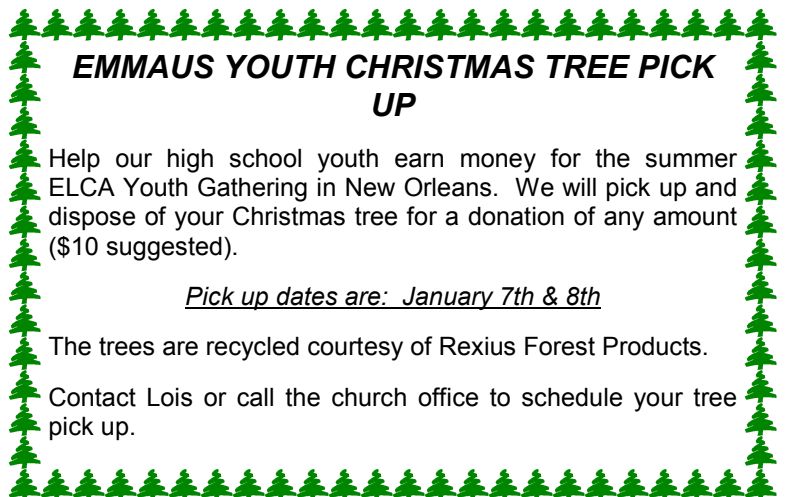
EMMAUS YOUTH CHRISTMAS TREE PICK UP

Help our high school youth earn money for the summer ELCA Youth Gathering in New Orleans. We will pick up and dispose of your Christmas tree for a donation of any amount (\$10 suggested).

Pick up dates are: January 7th & 8th

The trees are recycled courtesy of Rexius Forest Products.

Contact Lois or call the church office to schedule your tree pick up.





EMMAUS LUTHERAN CHURCH
 Rev. Steven Carlson, Pastor
 1250 West 18th Avenue
 Eugene, OR 97402

NON-PROFIT ORG
 US POSTAGE
 PAID
 PERMIT NO. 28
 EUGENE, OREGON

RETURN SERVICE REQUESTED

DATED MATERIAL

WHAT'S HAPPENING AT EMMAUS

**SUNDAY, JANUARY 8
 BAPTISM OF OUR LORD**

Genesis 1:1-5; Psalm 29; Acts 19:1-7; Mark 1:4-11

- 8:30 am — Holy Communion
- 9:30 am — Coffee Fellowship following worship
- 10:00 am — Sunday School & Forum
- 11:00 am — Holy Communion
- 12:00 noon — Birthday Bash Brunch
- 5:30 pm — High School Phunday Nite
- Christmas Tree Pick up

TUESDAY, JANUARY 10

- 9:00 am — Emmaus Quilt Makers
- 1:00 pm — Rebecca Circle
- 7:00 pm — Mary Circle
- *7:00 pm — Eugene Concert Choir: Fellowship Hall

WEDNESDAY, JANUARY 11

- 9:00 am — Elva's Raiders
- 10:00 am — Bible Study
- 6:30 pm — Confirmation
- 7:30 pm — Choir Rehearsal

THURSDAY, JANUARY 12

- 9:00 am — Staff Meeting
- 9:30 am — Naomi Circle

Prayer Calendar: Week 15
 *Community events at Emmaus

**SUNDAY, JANUARY 15
 SECOND SUNDAY AFTER EPIPHANY**

1 Samuel 3:1-10 [11-20]; Psalm 139:1-6, 13-18;
 1 Corinthians 6:12-20; John 1:43-51

- Consecration Sunday
- 8:30 am — Holy Communion
- 9:30 am — Coffee Fellowship following worship
- 10:00 am — Sunday School & Forum
- 11:00 am — Holy Communion
- 5:30 pm — High School Phunday Nite

MONDAY, JANUARY 16

- 2:00 pm — Esther Circle

TUESDAY, JANUARY 17

- 9:00 am — Emmaus Quilt Makers
- *7:00 pm — Eugene Concert Choir

WEDNESDAY, JANUARY 18

- 9:00 am — Elva's Raiders
- 10:00 am — Bible Study
- 6:30 pm — Confirmation
- 7:30 pm — Choir Rehearsal

THURSDAY, JANUARY 19

- 9:00 am — Staff Meeting

FRIDAY, JANUARY 20

- *6:00 pm — Oregon Festival Choir: Fellowship Hall, Sanctuary & Kitchen

Prayer Calendar: Week 16
 *Community events at Emmaus

Dear Emmaus Family,

From Pastor Steve...

Imagine that there is a bank which credits an account in your name each day with \$86,400, carries over no remaining balance from day to day, allows you to keep no cash balance, and at the end of every day cancels whatever part of the amount you failed to use.

Each of us does have such a bank! Its name is *TIME*. Every day it credits you with 86,400 seconds. It carries over no balance. It allows no overdrafts. If you fail to use the daily deposits, the loss is yours. There is no drawing against tomorrow. You must live in the present on each day's deposit.

The clock is running; make the most of each day!

- ✓ To realize the value of *ONE YEAR*...ask the student who has failed an exam.
- ✓ To realize the value of *ONE MONTH*...ask a mother who has given birth to a premature baby.
- ✓ To realize the value of *ONE DAY*...ask a daily wage earner who has six kids to feed.
- ✓ To realize the value of *ONE HOUR*...ask the lovers who are waiting to meet.
- ✓ To realize the value of *ONE MINUTE*...ask a person who has missed a plane.
- ✓ To realize the value of *ONE SECOND*...ask a person who has survived an accident.
- ✓ To realize the value of *ONE MILLISECOND*...ask the person who has won a silver medal in the Olympics.

Treasure the gift of every second you have!

In Christian partnership,

Pastor Steve



MISSION STATEMENT

EMMAUS LUTHERAN CHURCH IS A
FAMILY
 OF GOD'S CHILDREN,
RESPONDING
 TO THE GRACE OF GOD, WHICH
UNITES
 US IN JESUS CHRIST BY
SERVING
 THE LORD WITH GLADNESS.
EMPOWERED
 BY THE HOLY SPIRIT, WE
ADDRESS THE NEEDS
 OF GOD'S CREATION BY MAKING
JESUS CHRIST KNOWN.

EMMAUS LUTHERAN CHURCH

Website:
www.emmauseugene.org

Email:
office@emmauseugene.org
pastorsteve@emmauseugene.org
lois@emmauseugene.org

541-344-1150
541-344-1086 (FAX)

OFFICE HOURS:
 MONDAY-FRIDAY
 9:00 AM-1:00 PM

BULLETIN DEADLINE:
 10:00 AM THURSDAY EACH WEEK

NEWSLETTER DEADLINE:
 FRIDAY, JANUARY 6